

## IWW- JACKSONVILLE TO MIAMI, FL DUVAL COUNTY CUTS DU-1 THRU DU-19 HYDROGRAPHIC EXAM SURVEY FY21 12-FOOT PROJECT

### SURVEY NOTES

1. REFER TO SURVEY NO. 21-204.
2. SOUNDINGS ARE IN FEET AND TENTHS AND REFER TO NOAA'S REPORTED MEAN LOWER LOW WATER (MLLW) OF THE 1983-2001 TIDAL EPOCH.
3. TIDAL REDUCTIONS WERE OBTAINED UTILIZING A REAL-TIME KINEMATIC (RTK) GPS AND REFERENCED TO MLLW UTILIZING A HYPACK KINEMATIC TIDE DATUM (KTD) MODEL. KTD FILE NAME IS: "CAMDENGGA-NASSAU-DUVAL-STJOHNS-FLAGLER\_20191202.KTD".
4. ALL ELEVATIONS ARE BELOW THE CHART DATUM UNLESS PRECEDED BY A (+) SIGN.
5. PLANE COORDINATES ARE BASED ON THE TRANSVERSE MERCATOR PROJECTION FOR THE EAST ZONE OF FLORIDA AND REFERENCED TO NORTH AMERICAN DATUM OF 1983 (NAD83).
6. ALL STATIONING REFERS TO THE CENTERLINE OF THE CHANNEL.
7. THIS SURVEY WAS PERFORMED USING FLORIDA PERMANENT REFERENCE NETWORK (VRS) FOR REAL-TIME KINEMATIC (RTK) GPS POSITIONING.
8. DEPTHS DEPICTED BY THIS SURVEY ARE REFERENCED TO MLLW, TIDAL EPOCH 1983-2001 AS REPORTED BY THE NATIONAL OCEANIC AND ATMOSPHERIC ADMINISTRATION (NOAA). NOAA'S DATUM MODEL WAS USED AND CALIBRATED TO THE PUBLISHED MLLW HEIGHTS OF THE BENCHMARK SITES SPECIFIED BELOW:  
 NOAA TIDAL STATION "872-0267 E TIDAL" FOR CUTS DU-8 THRU DU-19, (NGS PID: DH9475)  
 NOAA TIDAL STATION "872-0218 TIDAL A" FOR CUTS DU-1 THRU DU-7, (NGS PID: DI9221)  
 VERTICAL MEASUREMENTS WERE MADE USING AN EDGE TECH 6205 MULTI-PHASE ECHOSOUNDER AND A TELEDYNE ODOM ECHOTRAC E20. ALL SOUNDINGS SHOWN ARE IN HIGH FREQUENCY.
9. AIDS TO NAVIGATION WERE LOCATED DURING THIS SURVEY.
10. THE INFORMATION DEPICTED ON THIS MAP REPRESENTS THE RESULTS OF SURVEYS MADE ON THE DATES INDICATED ABOVE AND CAN ONLY BE CONSIDERED AS INDICATING THE GENERAL CONDITIONS AT THAT TIME. THIS CHART IS SOLELY FOR THE DISTRIBUTION OF AVAILABLE DEPTHS AT THE TIME OF THE SURVEY.
11. SURVEY ACCURACY PERFORMANCE STANDARDS, QUALITY CONTROL, AND QUALITY ASSURANCE REQUIREMENTS WERE FOLLOWED DURING THIS SURVEY IN ACCORDANCE WITH USACE EM 1110-2-1003, HYDROGRAPHIC SURVEYING, 30 NOV 2013.

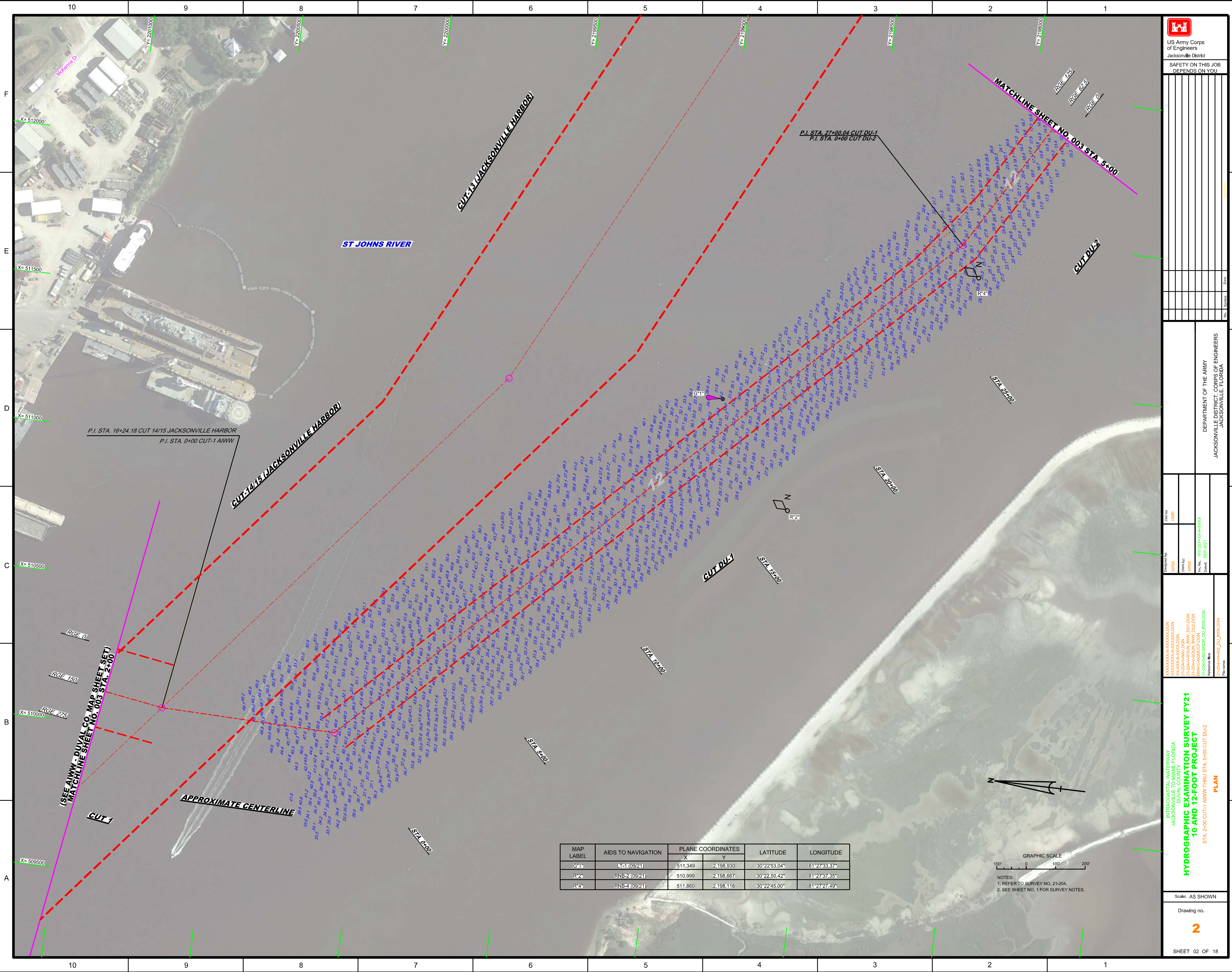
LEGEND	
	MONUMENT
	LIGHTED BEACON
	GREEN DAY BEACON
	RED DAY BEACON
	RED LIGHTED BUOY
	GREEN LIGHTED BUOY
	CAN BUOY
	NUN BUOY
	TIDE STAFF
	PROJECT DEPTH

US Army Corps of Engineers  
Jacksonville District

**SAFETY ON THIS JOB  
DEPENDS ON YOU**

DESIGNED BY: WRM DRAWN BY: WRM CHECKED BY: WRM DATE: SEP 2021	DESIGNED BY: GHR DRAWN BY: GHR CHECKED BY: GHR DATE: SEP 2021
DEPARTMENT OF THE ARMY JACKSONVILLE DISTRICT, CORPS OF ENGINEERS JACKSONVILLE, FLORIDA	
<b>HYDROGRAPHIC EXAMINATION SURVEY FY21 10 AND 12-FOOT PROJECT</b> INDEX, LOCATION AND VICINITY <b>MAP</b>	
Scale: AS SHOWN Drawing no. <b style="font-size: 2em;">1</b>	
SHEET 01 OF 18	





MAP LABEL	AIDS TO NAVIGATION	PLANE COORDINATES		LATITUDE	LONGITUDE
		X	Y		
G-1*	LT-1 (09/21)	511,349	2,198,930	30°22'53.04"	81°27'33.37"
R-2*	RNB-2 (09/21)	510,999	2,198,667	30°22'50.42"	81°27'37.35"
R-4*	RNB-4 (09/21)	511,860	2,198,116	30°22'45.00"	81°27'27.49"

US Army Corps of Engineers  
Jacksonville District

**SAFETY ON THIS JOB DEPENDS ON YOU**

---

Checked By: GHR  
 Designed By: WRM  
 Drawn By: WRM  
 File No: W825P-AV-AV-004  
 Date: SEP 2021

---

INTRACOASTAL WATERWAY  
 JACKSONVILLE TO MIAMI, FLORIDA  
 DUVAL COUNTY  
**HYDROGRAPHIC EXAMINATION SURVEY FY21  
 10 AND 12-FOOT PROJECT**  
 STA. 2+00 CUT-1 AWWW THRU STA. 5+00 CUT DU-2  
**PLAN**

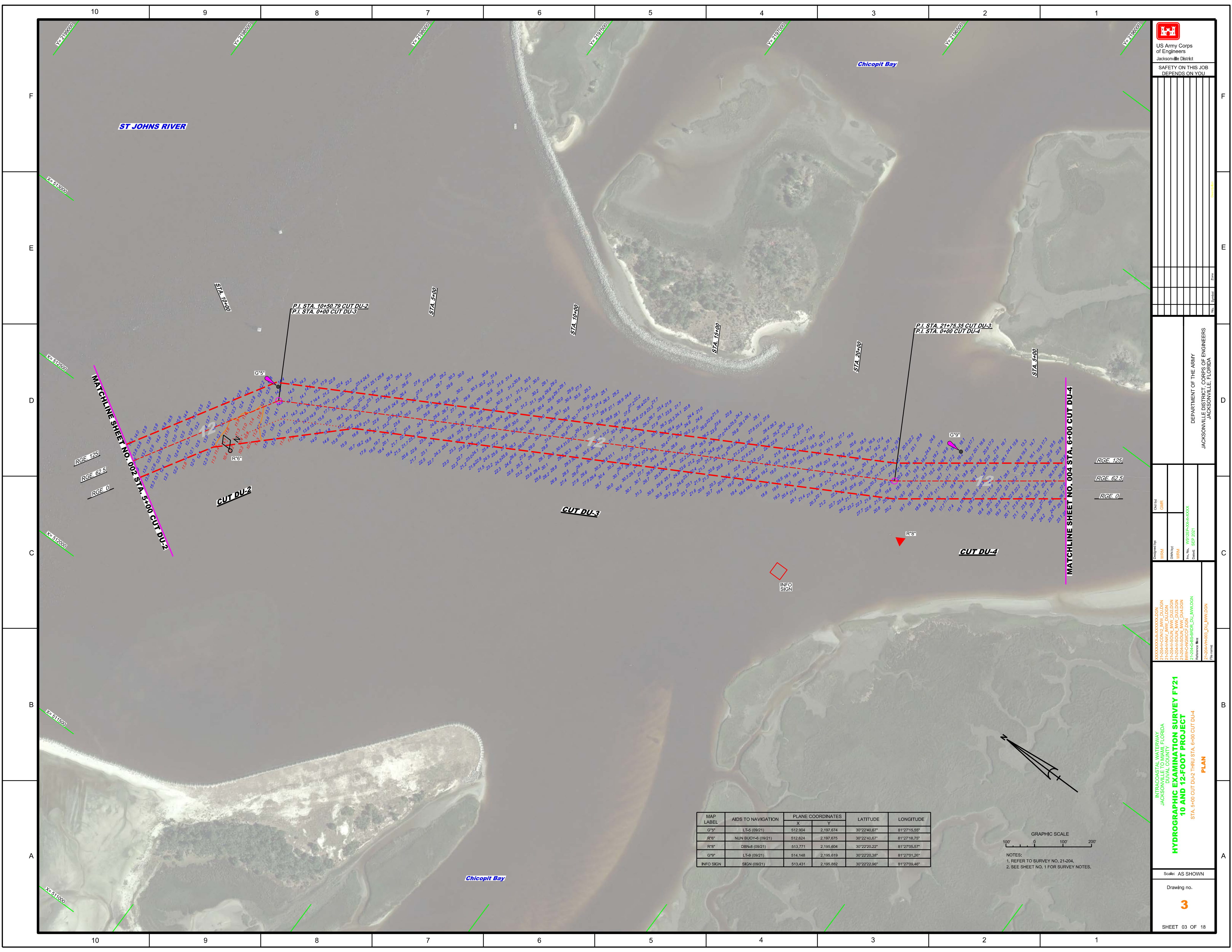
---


Scale: AS SHOWN

Drawing no.  
**2**

SHEET 02 OF 18






  
 US Army Corps of Engineers  
 Jacksonville District  
 SAFETY ON THIS JOB  
 DEPENDS ON YOU

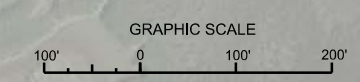
DEPARTMENT OF THE ARMY  
 JACKSONVILLE DISTRICT, CORPS OF ENGINEERS  
 JACKSONVILLE, FLORIDA

Call by: GHR  
 Designed by: WRM  
 Drawn by: WRM  
 File No: W82252-000-0004  
 Date: SEP 2021  
 Reference File: 21-204-H400-DU-1-JWW.DGN  
 File Name:

INTRACOASTAL WATERWAY  
 JACKSONVILLE TO MIAMI, FLORIDA  
 DUVAL COUNTY  
**HYDROGRAPHIC EXAMINATION SURVEY FY21  
 10 AND 12-FOOT PROJECT**  
 STA. 5+00 CUT DU-2 THRU STA. 6+00 CUT DU-4  
**PLAN**

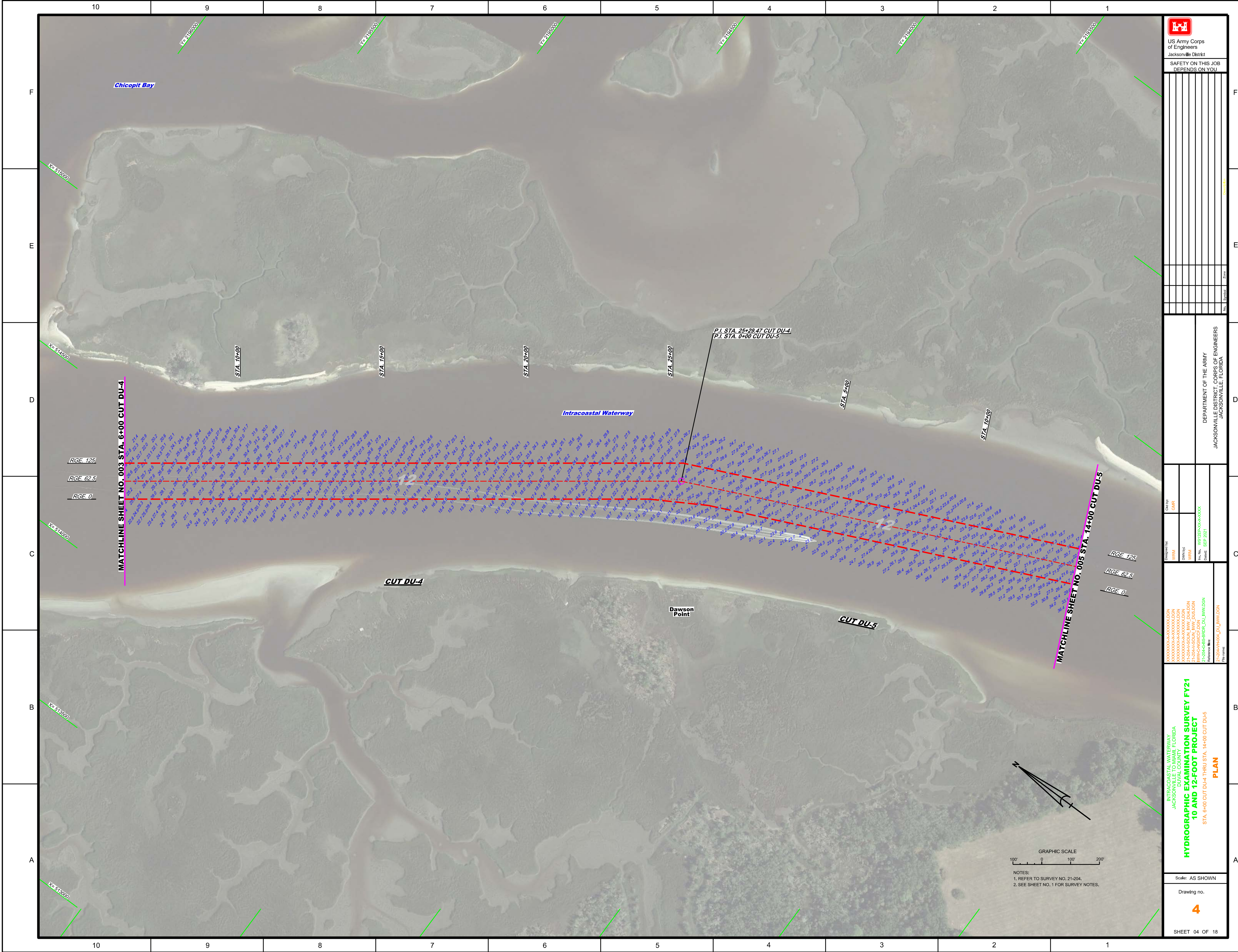
Scale: AS SHOWN  
 Drawing no.  
**3**  
 SHEET 03 OF 18

MAP LABEL	AIDS TO NAVIGATION	PLANE COORDINATES		LATITUDE	LONGITUDE
		X	Y		
G-5"	LT-5 (09/21)	512,904	2,197,674	30°22'40.87"	81°27'15.55"
R-6"	NUN BUOY-8 (09/21)	512,624	2,197,675	30°22'40.67"	81°27'18.75"
R-5"	DBN-8 (09/21)	513,771	2,195,604	30°22'20.22"	81°27'05.57"
G-9"	LT-9 (09/21)	514,148	2,195,619	30°22'20.38"	81°27'01.26"
INFO SIGN	SIGN (09/21)	513,431	2,195,882	30°22'22.96"	81°27'09.46"



NOTES:  
 1. REFER TO SURVEY NO. 21-204.  
 2. SEE SHEET NO. 1 FOR SURVEY NOTES.





Rev.	Date	Description

DEPARTMENT OF THE ARMY  
 JACKSONVILLE DISTRICT, CORPS OF ENGINEERS  
 JACKSONVILLE, FLORIDA

Checked by: GHR  
 Designed by: VWM  
 Drawn by: VWM  
 File No.: W325P-A-19-V400A  
 Date: SEP 2021

XXXXXXXXXXXXXXXXXXXX  
 XXXXXXXXXXXXXXXXXXXX  
 XXXXXXXXXXXXXXXXXXXX  
 XXXXXXXXXXXXXXXXXXXX  
 XXXXXXXXXXXXXXXXXXXX  
 XXXXXXXXXXXXXXXXXXXX  
 XXXXXXXXXXXXXXXXXXXX  
 XXXXXXXXXXXXXXXXXXXX  
 XXXXXXXXXXXXXXXXXXXX  
 XXXXXXXXXXXXXXXXXXXX  
 XXXXXXXXXXXXXXXXXXXX  
 XXXXXXXXXXXXXXXXXXXX

INTRACOASTAL WATERWAY  
 JACKSONVILLE TO MIAMI, FLORIDA  
 DUVAL COUNTY  
**HYDROGRAPHIC EXAMINATION SURVEY FY21  
 10 AND 12-FOOT PROJECT**  
 STA. 6+00 CUT DU-4 THRU STA. 14+00 CUT DU-5  
**PLAN**

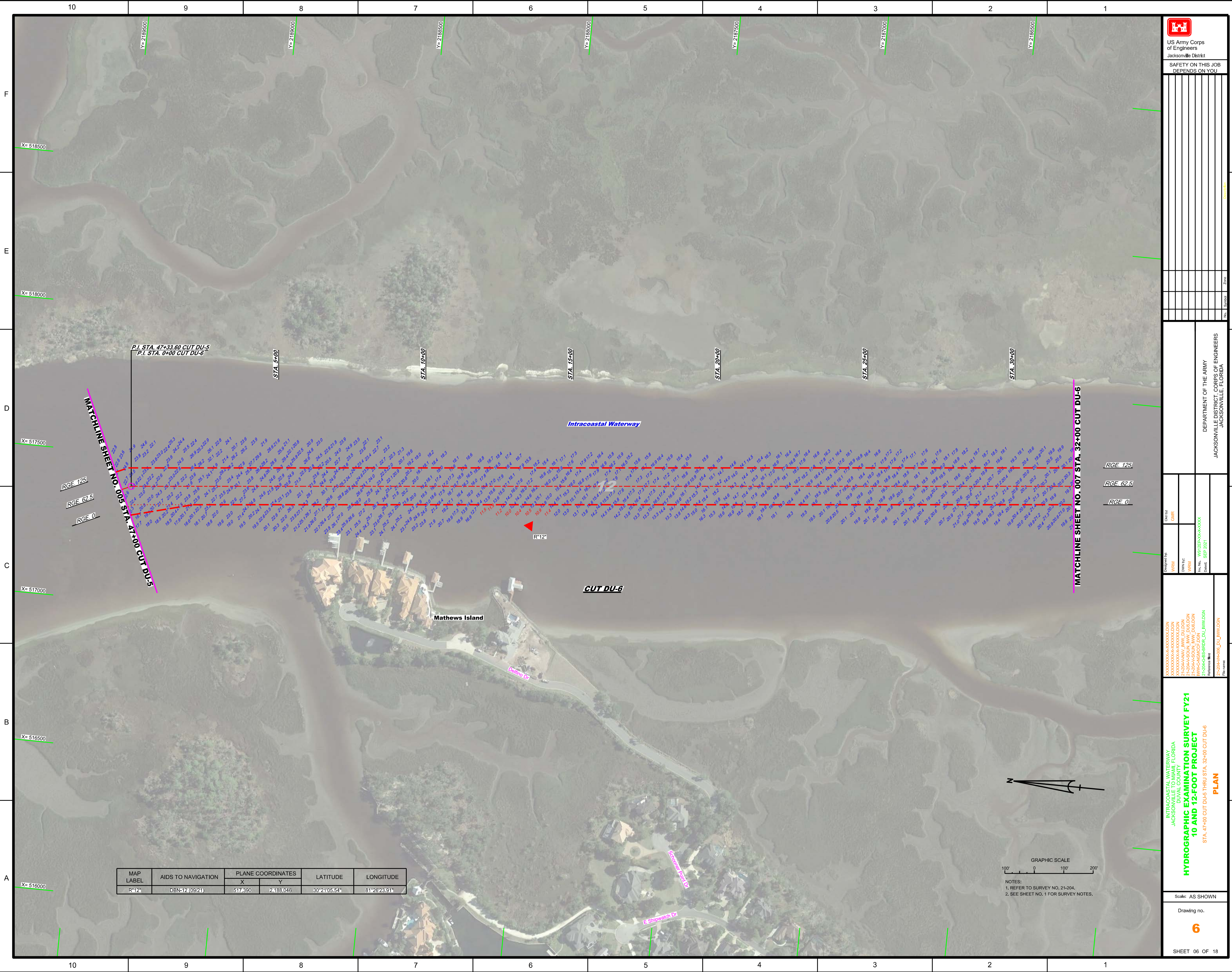
Scale: AS SHOWN  
 Drawing no.  
**4**  
 SHEET 04 OF 18

GRAPHIC SCALE  
 100' 0 100' 200'  
 NOTES:  
 1. REFER TO SURVEY NO. 21-204.  
 2. SEE SHEET NO. 1 FOR SURVEY NOTES.










MAP LABEL	AIDS TO NAVIGATION	PLANE COORDINATES		LATITUDE	LONGITUDE
		X	Y		
R-12	DBN-12(09/21)	517,690	2,188,046	30°21'05.54"	81°26'23.91"

GRAPHIC SCALE  
 100' 0 100' 200'  
 NOTES:  
 1. REFER TO SURVEY NO. 21-204.  
 2. SEE SHEET NO. 1 FOR SURVEY NOTES.



US Army Corps of Engineers  
 Jacksonville District  
 SAFETY ON THIS JOB DEPENDS ON YOU

DESIGNED BY: WRM DRAWN BY: WRM FILE NO.: W82556-000-0004 DATE: SEP 2021	CHECKED BY: GHR DEPARTMENT OF THE ARMY JACKSONVILLE DISTRICT, CORPS OF ENGINEERS JACKSONVILLE, FLORIDA
<b>INTRACOASTAL WATERWAY          JACKSONVILLE TO MIAMI, FLORIDA          DUVAL COUNTY          HYDROGRAPHIC EXAMINATION SURVEY FY21          10 AND 12-FOOT PROJECT</b>	
STA. 47+00 CUT DU-5 THRU STA. 32+00 CUT DU-6 <b>PLAN</b>	
Scale: AS SHOWN Drawing no. <b>6</b> SHEET 06 OF 18	



DEPARTMENT OF THE ARMY  
 JACKSONVILLE DISTRICT, CORPS OF ENGINEERS  
 JACKSONVILLE, FLORIDA

Designed by: <b>WRM</b> Drawn by: <b>WRM</b> File No.: <b>W92559-A000-X004</b> Date: <b>SEP 2021</b>	Checked by: <b>GHR</b>
---	---------------------------

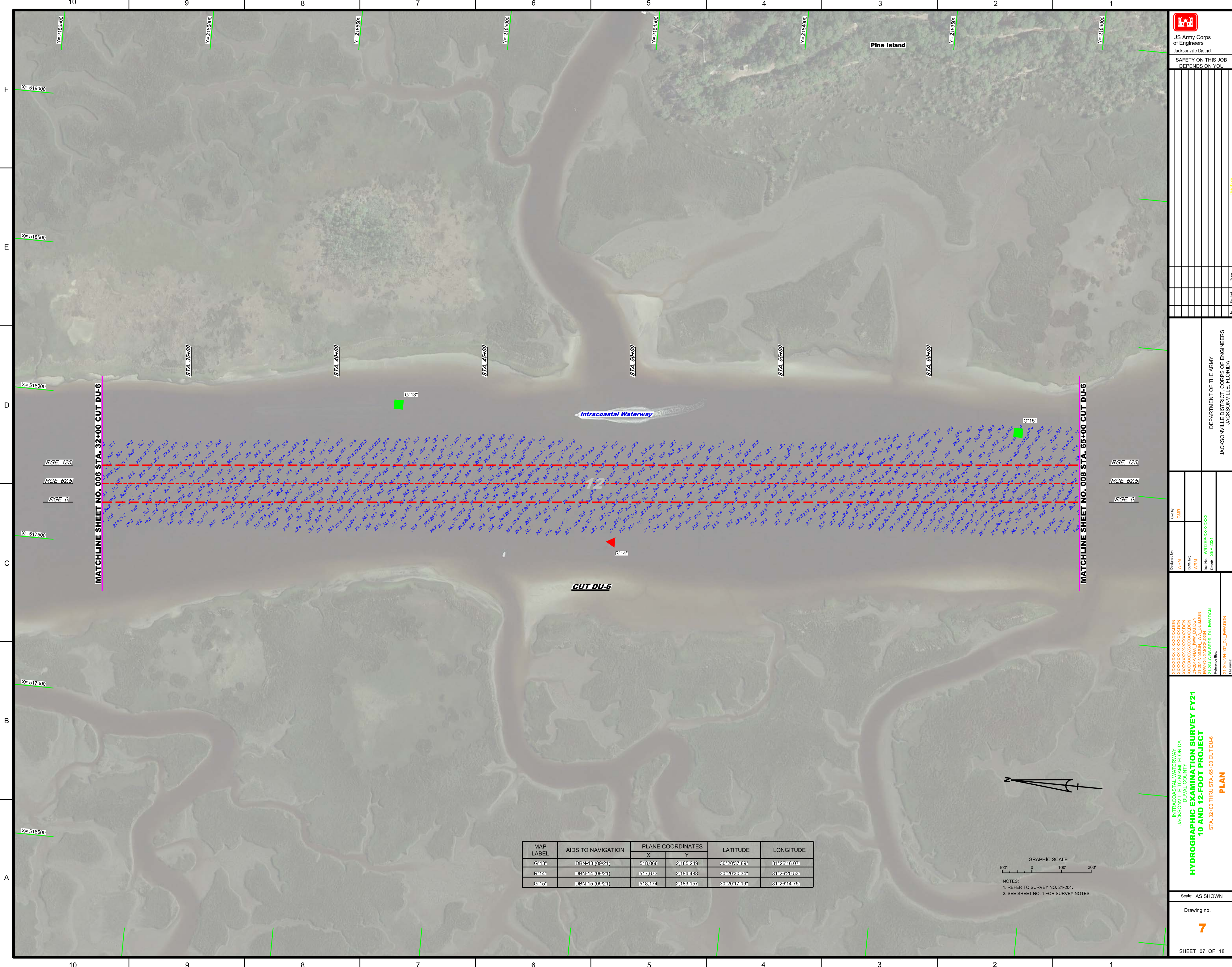
INTRACOASTAL WATERWAY  
 JACKSONVILLE TO MIAMI, FLORIDA  
 DUVAL COUNTY

**HYDROGRAPHIC EXAMINATION SURVEY FY21**  
**10 AND 12-FOOT PROJECT**

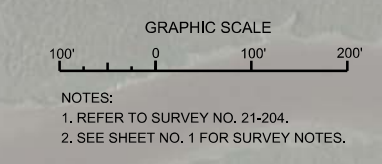
STA. 32+00 THRU STA. 65+00 CUT DU-6

PLAN

Reference files:  
 21-20-1-HY07\_DU\_JWW.DGN



MAP LABEL	AIDS TO NAVIGATION	PLANE COORDINATES		LATITUDE	LONGITUDE
		X	Y		
G13*	DBN-13 (09/21)	518,066	2,185,249	30°20'37.89"	81°28'16.07"
R14*	DBN-14 (09/21)	517,673	2,184,488	30°20'30.84"	81°28'20.53"
G15*	DBN-15 (09/21)	518,174	2,183,157	30°20'17.91"	81°28'14.75"



**MATCHLINE SHEET NO. 006 STA. 32+00 CUT DU-6**

**MATCHLINE SHEET NO. 008 STA. 65+00 CUT DU-6**

RGE. 125  
 RGE. 62.5  
 RGE. 0

RGE. 125  
 RGE. 62.5  
 RGE. 0

Intracoastal Waterway

CUT DU-6

Pine Island

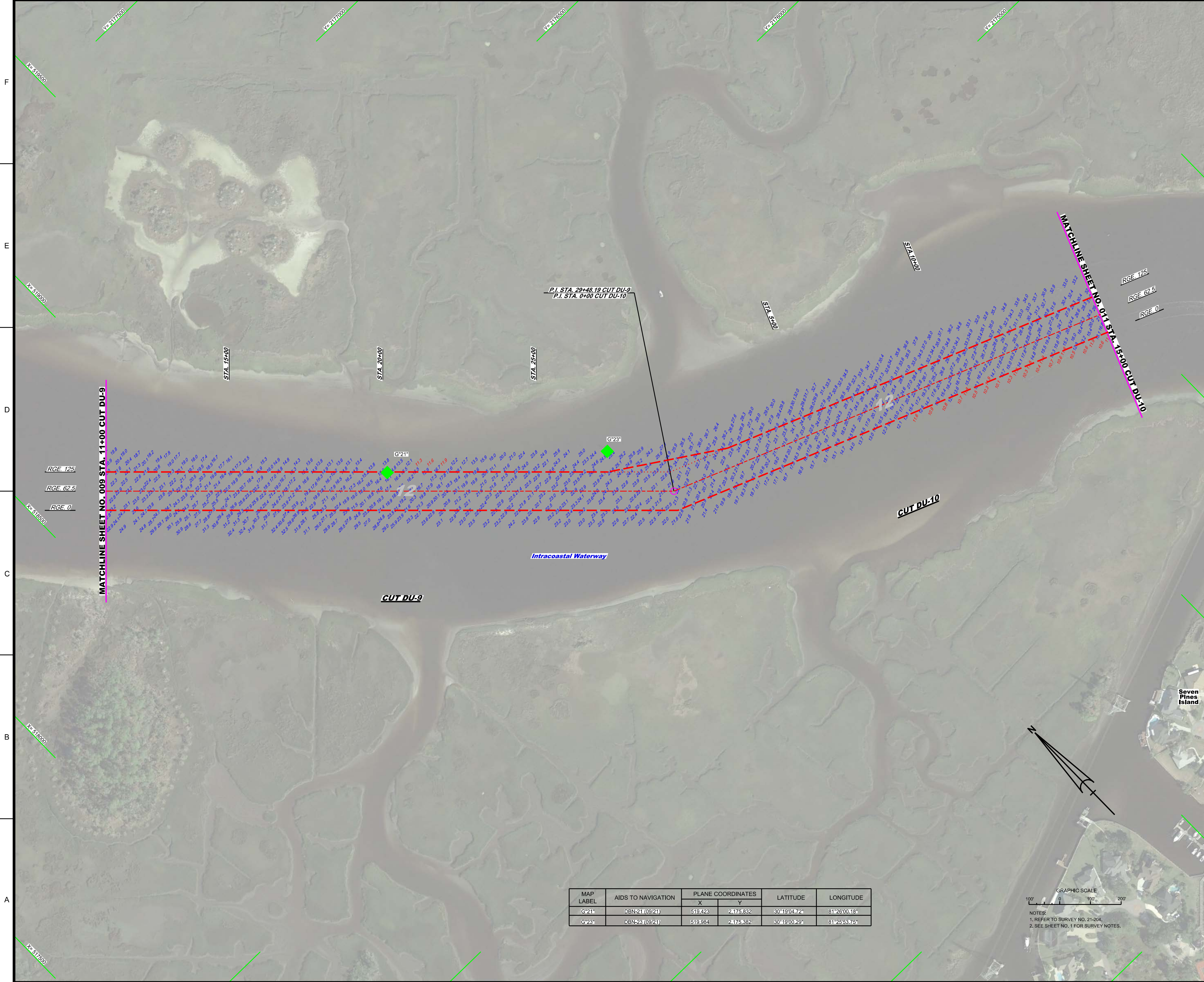








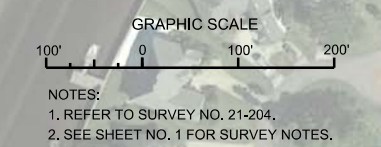




MATCHLINE SHEET NO. 009 STA. 11+00 CUT DU-9

MATCHLINE SHEET NO. 011 STA. 15+00 CUT DU-10

MAP LABEL	AIDS TO NAVIGATION	PLANE COORDINATES		LATITUDE	LONGITUDE
		X	Y		
G*21*	DBN21 (09/21)	519,423	2,175,832	30°19'04.72"	81°26'00.18"
G*23*	DBN23 (09/21)	519,984	2,175,382	30°19'00.29"	81°25'53.75"



Checked by: GMR  
Designed by: WRM  
Drawn by: WRM  
File No.: W02P55-KA-V-003  
Date: SEP 2021

XXXXXXXXXXXXXXXXXX.DGN  
XXXXXXXXXXXXXXXXXX.DGN  
XXXXXXXXXX.VMW.DWG.DGN  
XXXXXXXXXX.VMW.DWG.DGN  
XXXXXXXXXX.VMW.DWG.DGN  
XXXXXXXXXX.VMW.DWG.DGN  
XXXXXXXXXX.VMW.DWG.DGN

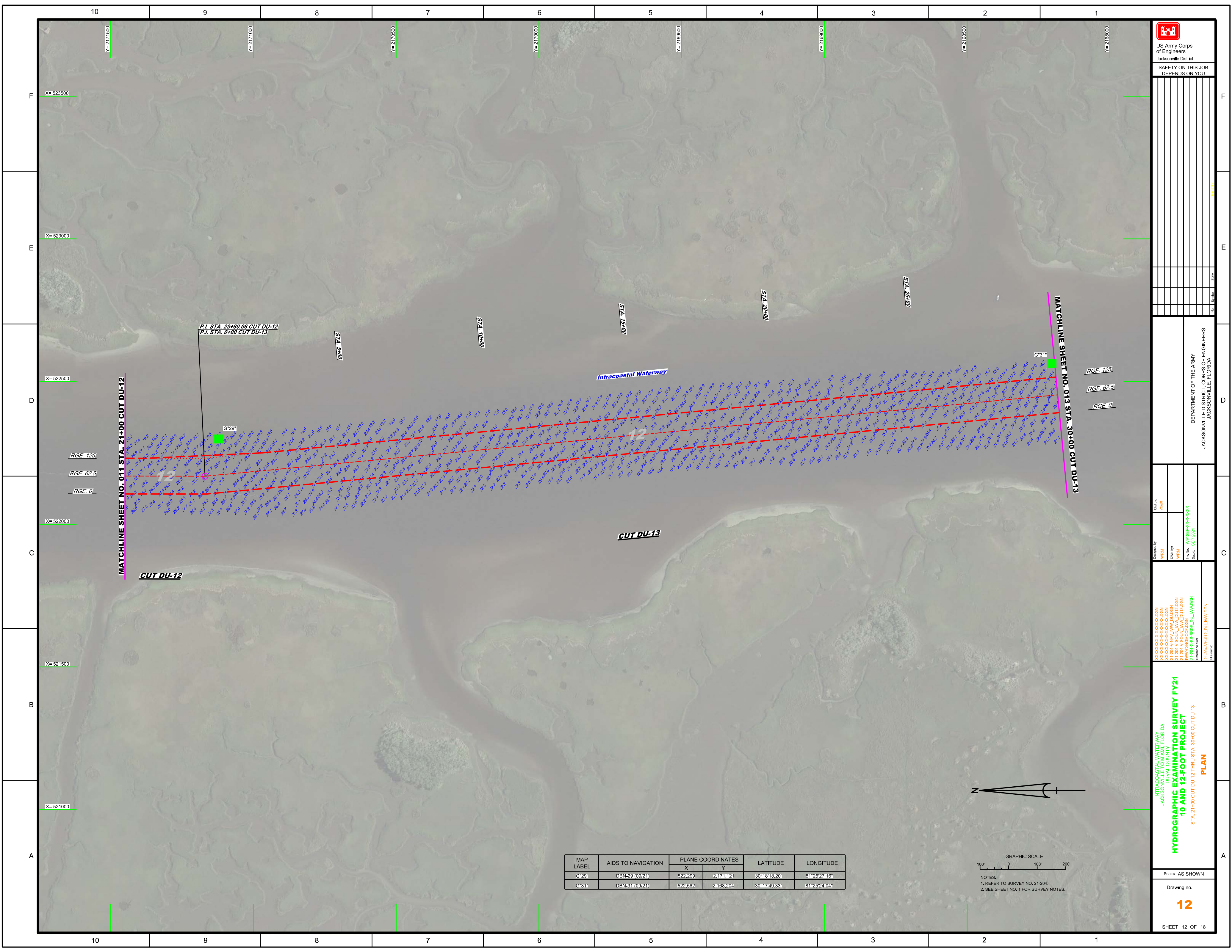
Reference files:  
21-204-H01(L)DU\_VMW.DGN  
File name:


INTRACOASTAL WATERWAY  
JACKSONVILLE TO MIAMI, FLORIDA  
DUVAL COUNTY  
**HYDROGRAPHIC EXAMINATION SURVEY FY21  
10 AND 12-FOOT PROJECT**  
STA. 11+00 CUT DU-9 THRU STA. 15+00 CUT DU-10  
**PLAN**









  
 US Army Corps of Engineers  
 Jacksonville District  
 SAFETY ON THIS JOB  
 DEPENDS ON YOU

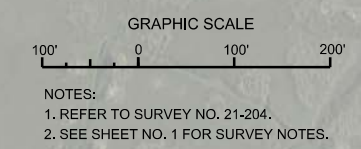
DEPARTMENT OF THE ARMY  
 JACKSONVILLE DISTRICT, CORPS OF ENGINEERS  
 JACKSONVILLE, FLORIDA

Checked By: GHR  
 Designed By: WRM  
 Drawn By: WRM  
 File No: W82254-000-0004  
 Date: SEP 2021

INTRACOASTAL WATERWAY  
 JACKSONVILLE TO MIAMI, FLORIDA  
 DUVAL COUNTY  
**HYDROGRAPHIC EXAMINATION SURVEY FY21**  
**10 AND 12-FOOT PROJECT**  
 STA. 21+00 CUT DU-12 THRU STA. 30+00 CUT DU-13  
**PLAN**

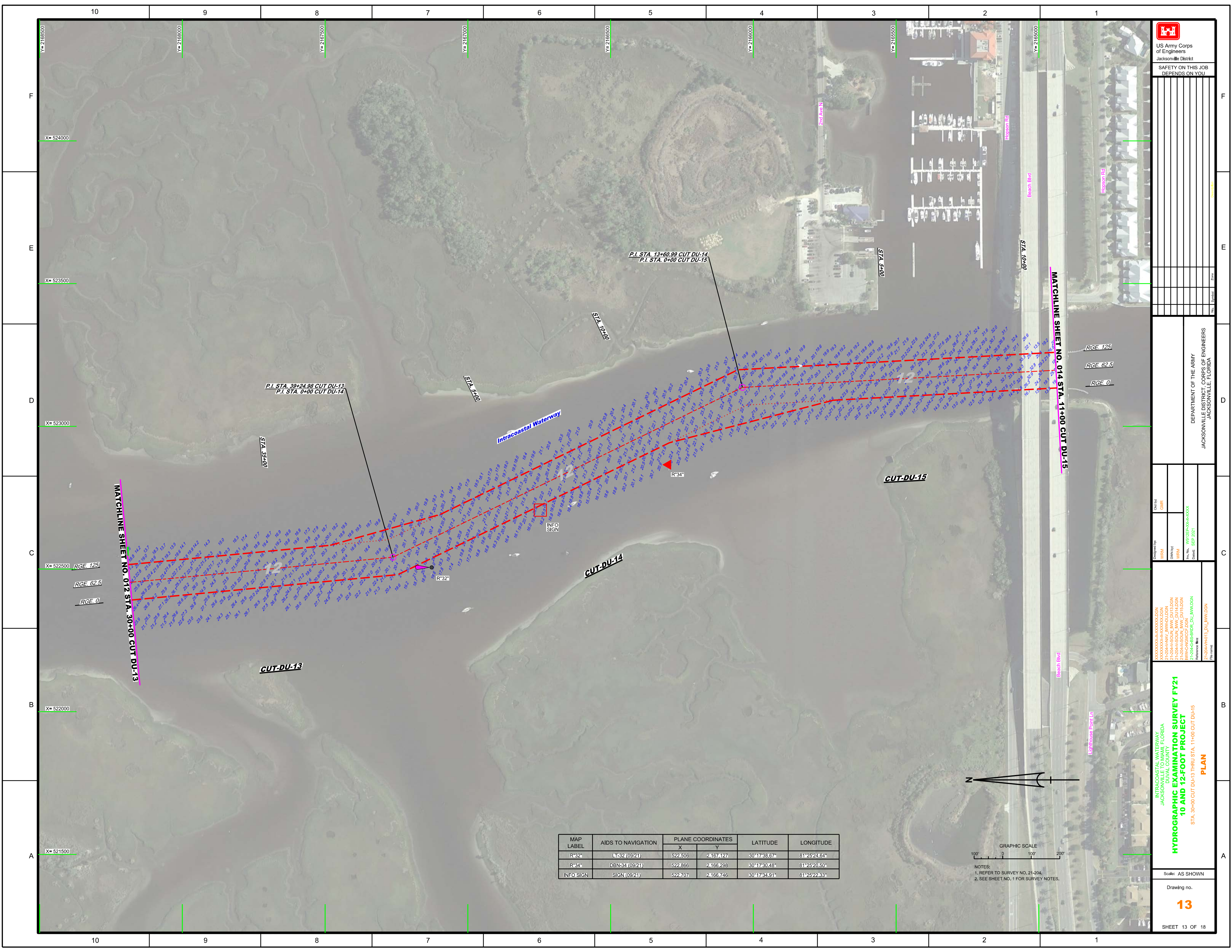
Scale: AS SHOWN  
 Drawing no.  
**12**  
 SHEET 12 OF 18

MAP LABEL	AIDS TO NAVIGATION	PLANE COORDINATES		LATITUDE	LONGITUDE
		X	Y		
G*29*	DBN-29 (09/21)	522,290	2,171,121	30°18'18.20"	81°25'27.16"
G*31*	DBN-31 (09/21)	522,562	2,168,204	30°17'49.33"	81°25'24.04"

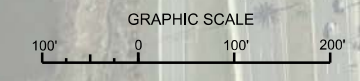


NOTES:  
 1. REFER TO SURVEY NO. 21-204.  
 2. SEE SHEET NO. 1 FOR SURVEY NOTES.





MAP LABEL	AIDS TO NAVIGATION	PLANE COORDINATES		LATITUDE	LONGITUDE
		X	Y		
R*32*	LT-32 (09/21)	522,506	2,167,127	30°17'38.67"	81°25'24.64"
R*34*	DBN-34 (09/21)	522,866	2,166,298	30°17'30.48"	81°25'20.50"
INFO SIGN	SIGN (09/21)	522,707	2,166,746	30°17'34.91"	81°25'22.33"



NOTES:  
 1. REFER TO SURVEY NO. 21-204.  
 2. SEE SHEET NO. 1 FOR SURVEY NOTES.

**US Army Corps of Engineers**  
 Jacksonville District

SAFETY ON THIS JOB  
 DEPENDS ON YOU

---

DEPARTMENT OF THE ARMY  
 JACKSONVILLE DISTRICT, CORPS OF ENGINEERS  
 JACKSONVILLE, FLORIDA

---

**HYDROGRAPHIC EXAMINATION SURVEY FY21**  
**10 AND 12-FOOT PROJECT**  
 STA. 30+00 CUT DU-13 THRU STA. 11+00 CUT DU-15  
**PLAN**

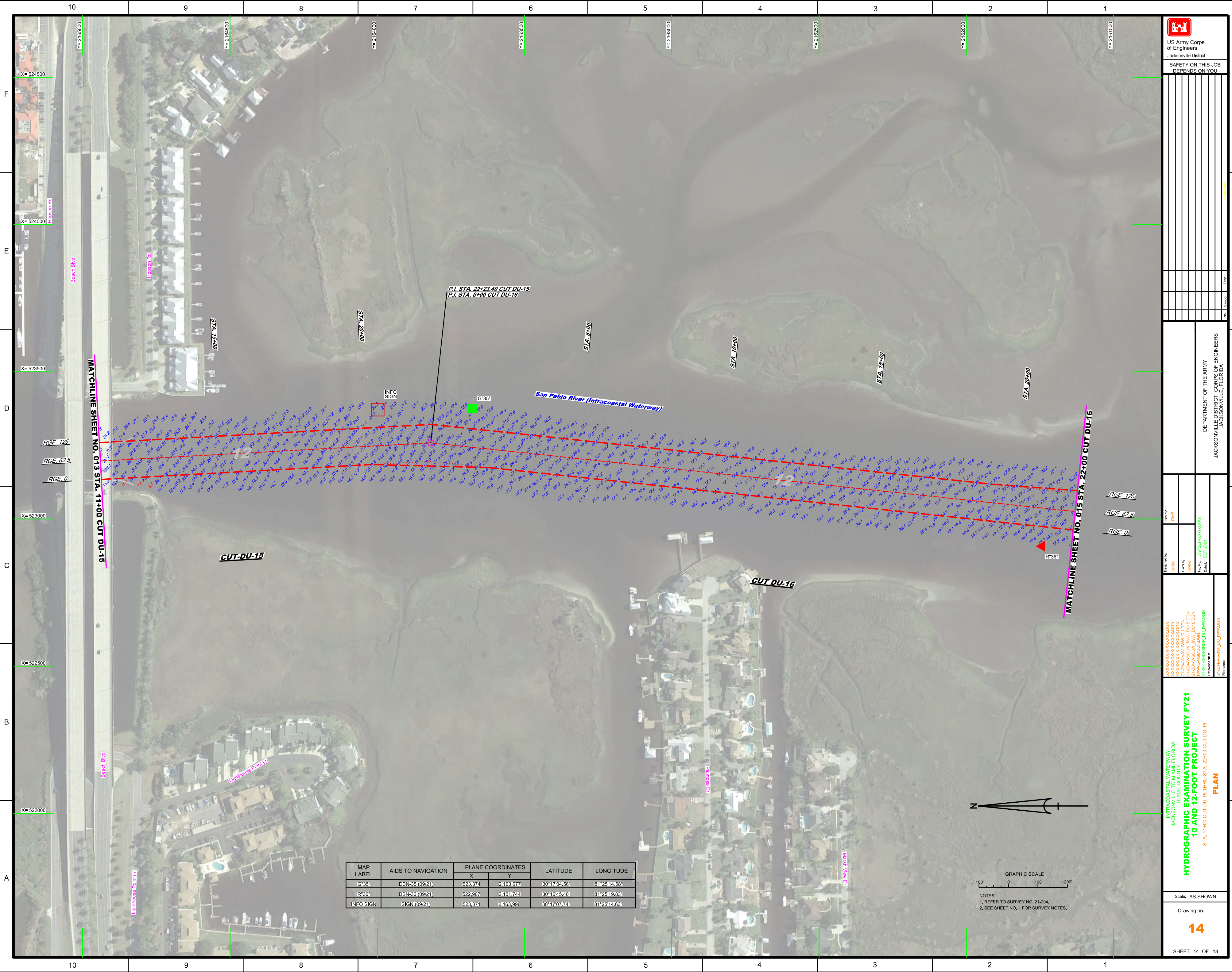
---

Scale: AS SHOWN

Drawing no.  
13

SHEET 13 OF 18





P.I. STA. 22+23.40 CUT DU-15  
P.I. STA. 0+00 CUT DU-16

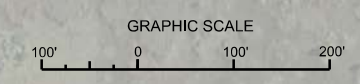
INFO SIGN

San Pablo River (Intracoastal Waterway)

CUT-DU-15

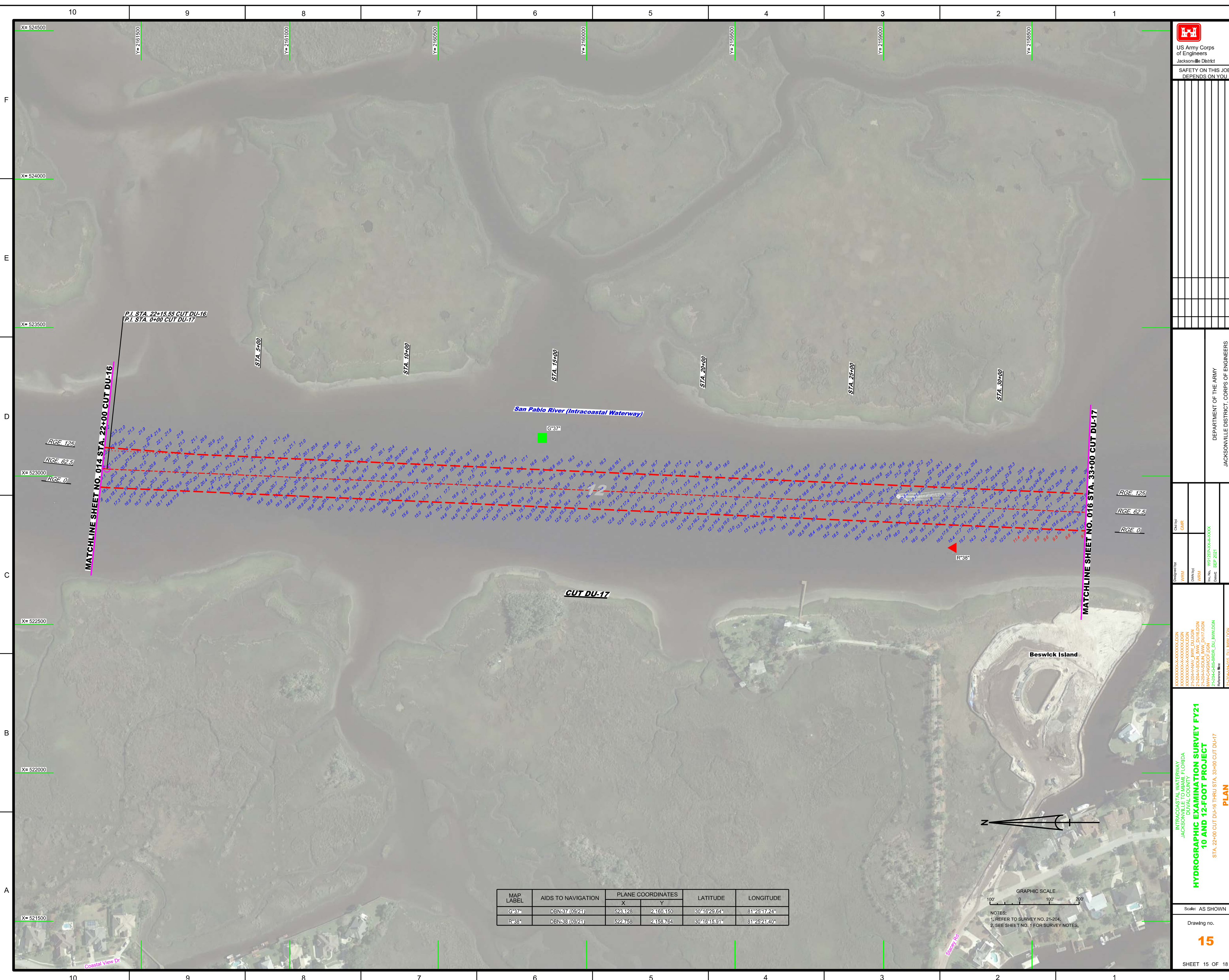
CUT DU-16


MAP LABEL	AIDS TO NAVIGATION	PLANE COORDINATES		LATITUDE	LONGITUDE
		X	Y		
G*35*	DBN-35 (09/21)	523374	2163577	30°17'04.56"	81°28'14.58"
R*36*	DBN-36 (09/21)	522307	2161744	30°16'45.40"	81°25'19.83"
INFO SIGN	SIGN (09/21)	523371	2163598	30°17'07.74"	81°28'14.63"



NOTES:  
1. REFER TO SURVEY NO. 21-204.  
2. SEE SHEET NO. 1 FOR SURVEY NOTES.





  
 US Army Corps  
 of Engineers  
 Jacksonville District  
 SAFETY ON THIS JOB  
 DEPENDS ON YOU

DEPARTMENT OF THE ARMY  
 JACKSONVILLE DISTRICT, CORPS OF ENGINEERS  
 JACKSONVILLE, FLORIDA

Checked By: GHR  
 Designed By: WRM  
 Drawn By: WRM  
 File No: W92555-000-0000  
 Date: SEP 2021

INTRACOASTAL WATERWAY  
 JACKSONVILLE TO MIAMI, FLORIDA  
 DUVAL COUNTY  
**HYDROGRAPHIC EXAMINATION SURVEY FY21  
 10 AND 12-FOOT PROJECT**  
 STA. 22+00 CUT DU-16 THRU STA. 33+00 CUT DU-17  
**PLAN**

Scale: AS SHOWN  
 Drawing no.  
**15**  
 SHEET 15 OF 18

MAP LABEL	AIDS TO NAVIGATION	PLANE COORDINATES		LATITUDE	LONGITUDE
		X	Y		
G37	DBN-37 (09/21)	523,128	2,160,150	30°16'29.64"	81°25'17.24"
R38	DBN-38 (09/21)	522,758	2,159,764	30°16'15.91"	81°25'21.40"



NOTES:  
 1. REFER TO SURVEY NO. 21-204.  
 2. SEE SHEET NO. 1 FOR SURVEY NOTES.









10 9 8 7 6 5 4 3 2 1  
F  
E  
D  
C  
B  
A  
X=522000  
X=521500  
X=521000  
X=520500  
X=520000  
X=5195000

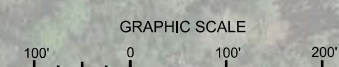
US Army Corps of Engineers  
Jacksonville District  
SAFETY ON THIS JOB  
DEPENDS ON YOU


DEPARTMENT OF THE ARMY  
JACKSONVILLE DISTRICT, CORPS OF ENGINEERS  
JACKSONVILLE, FLORIDA

Drawn by: WRM  
Checked by: WRM  
Designed by: WRM  
CA: GJR  
Date: SEP 2021  
File No: W9125R-NW-A-0004

INTRACOASTAL WATERWAY  
JACKSONVILLE TO MIAMI, FLORIDA  
DUVAL COUNTY  
HYDROGRAPHIC EXAMINATION SURVEY FY21  
10 AND 12-FOOT PROJECT  
STA. 32+00 CUT DU-18 THRU STA. 26+00 CUT DU-19  
PLAN

MAP LABEL	AIDS TO NAVIGATION	PLANE COORDINATES		LATITUDE	LONGITUDE
		X	Y		
G"43"	DBN-43 (09/21)	521,971	2,154,673	30°15'35.36"	81°25'37.05"
R"44"	L-44 (09/21)	521,018	2,154,327	30°15'31.92"	81°25'41.06"



NOTES:  
1. REFER TO SURVEY NO. 21-204.  
2. SEE SHEET NO. 1 FOR SURVEY NOTES.

Scale: AS SHOWN  
Drawing no.  
**17**  
SHEET 17 OF 18



